



# chilham parish council

serving chilham, old wives lees and shottenden

PO Box 983, Canterbury, Kent, CT1 9EA Email: [clerk@chilhamparishcouncil.gov.uk](mailto:clerk@chilhamparishcouncil.gov.uk)

Dear Parishioner

## STRATEGIC PLAN TO 2023 - INTRODUCTION FROM PAUL LULHAM, CHAIRMAN OF CHILHAM PARISH COUNCIL

I am pleased to present Chilham Parish Council's second Strategic Plan, which identifies the projects and work streams that the Council will prioritise over the course of its current four-year term to 2023. It reflects the feedback received from the annual Parish Question Time consultation exercise, during which we seek to establish the issues of greatest interest and concern to the residents of Chilham, Old Wives Lees and Shottenden.

The Plan is structured according to the extent to which the Parish Council – working with other statutory bodies and community groups – can wield the most influence over these issues and achieve the greatest impact.

The Parish Question Time exercise will continue to take place each Spring, in order that we may review our performance against this Plan and update it as necessary to reflect the progress we have made, as well as any new issues or priorities that might arise.

I would like to take this opportunity to thank those of you who participated in this year's consultation exercise and to encourage all Parishioners to engage with the work of the Parish Council going forward, either by attending our monthly meetings, logging on to our website, or making contact with individual Councillors or the Clerk to raise any issues or questions that you might have.

This Plan, and the Parish Question Time exercise that informs it, cannot be produced without the help of the Parishioners who form the Parish Distribution Network and take responsibility for delivering questionnaires to each household in the Parish. The Parish Council is hugely grateful for the continued support of these volunteers.

Yours sincerely,

Paul Lulham

Chairman of Chilham Parish Council

June 2019



## STRATEGIC PLAN TO 2023

### 1. MATTERS FOR WHICH THE COUNCIL IS DIRECTLY RESPONSIBLE

#### 1.1 Community Engagement

Council will conduct an engagement event in March each year to review its strategic plan and report on progress made.

A Strategic Plan update as a result of this engagement will be distributed to all households in the parish.

#### 1.2 Communication with parishioners

Council will communicate with its parishioners through parish noticeboards, website, emails to parish contacts, monthly items in Chilham Parish News and the quarterly newsletter PC Tips.

### 2. MATTERS WHICH THE COUNCIL WILL WORK IN PARTNERSHIP TO ACHIEVE

#### 2.1 Allocation of Section 106 monies from the Bagham Place development

Council will work in partnership with Ashford Borough Council and scheme promoters to maximise the benefits to parishioners from the monies available from the Bagham Place development.

#### 2.2 The Chilham Square Project

Council will work with Chilham's Future Development Board (CFDB) and push for submission of external funding bids by March 2020.

Council will encourage CFDB to provide an annual report for consideration at the March council meeting each year.

#### 2.3 Promoting tourism in the parish

Council will work in partnership with local organisations and businesses including Chilham Tourism & Retailers Group to ensure an annual summer event in the parish and look for other similar opportunities.

#### 2.4 Improving quality of life in the parish

Council will strengthen relationships with local organisations with the aim of enhancing the benefits they provide in the parish.

Council will work in partnership with the borough and county councils where it can add value to specific services that they provide (eg vegetation clearance, cleaning signs).



# chilham parish council

serving chilham, old wives lees and shottenden

PO Box 983, Canterbury, Kent, CT1 9EA Email: [clerk@chilhamparishcouncil.gov.uk](mailto:clerk@chilhamparishcouncil.gov.uk)

## 3. MATTERS ON WHICH THE COUNCIL WILL INFLUENCE OTHER BODIES

### 3.1 Planning policy

Significant parts of the parish are protected by the Kent Downs Area of Outstanding National Beauty and Great Stour flood plains.

Council will forge good working relationships with the borough council. It believes a combination of these environment constraints and strengthened relationships with neighbouring parish councils and the borough council puts it in a good position to positively influence local planning policy. It will work with the borough council to ensure the result of the Parish Design Statement refresh project achieves maximum weight within the planning process.

### 3.2 Crime Prevention Measures

Council will engage with local neighbourhood watch schemes to identify schemes with the potential of improving crime prevention in the parish.

### 3.3 Road Safety

Council will engage with Kent Highways to ensure the A252 Safer Roads Fund project identifies suitable solutions and respond positively to the Kent Highways initiative to work better with parish councils.

## **Chilham Parish Council (June 2019)**

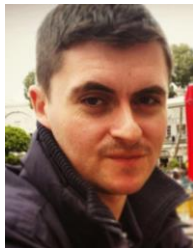


# chilham parish council

serving chilham, old wives lees and shottenden

PO Box 983, Canterbury, Kent, CT1 9EA Email: [clerk@chilhamparishcouncil.gov.uk](mailto:clerk@chilhamparishcouncil.gov.uk)

## MEMBERS OF CHILHAM PARISH COUNCIL



**PAUL LULHAM  
(CHAIRMAN)**  
12 Felborough  
Close, Chilham,  
Canterbury,  
CT4 8DS.  
T: 07584 166567



**NICK LESTER-  
DAVIS (VICE-  
CHAIRMAN)**  
Vine Cottage,  
Cobbs Hill, Old  
Wives Lees,  
Canterbury,  
CT4 8AL  
T: 07802 725258



**STEVE LINTER**  
Bramley Cottage,  
Shottenden,  
Canterbury,  
CT4 8JL  
T: 07739 100055



**DOUG  
MARRIOTT**  
New Forest Farm,  
New Forest Lane,  
Old Wives Lees,  
Canterbury,  
CT4 8BG.  
T: 01227 730912  
or 07860 331834



**JANE MARTIN**  
Yew Tree  
Cottage,  
Denne Manor  
Lane,  
Shottenden,  
CT4 8JJ.  
T: 07583 642202  
or 0845 8688519



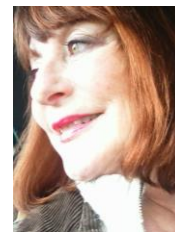
**GEOFF MEADEN**  
Gorewell, Grove  
Lane, Old Wives  
Lees, Canterbury,  
Kent,  
CT4 8BD.  
T: 01227 752275.



**GILL  
SCHOFIELD**  
8 Cherry Orchard,  
Old Wives Lees,  
Canterbury, CT4  
8BQ.  
T: 01227 732515  
or 07779 539617



**RICHARD  
SPENCER-  
TANNER**  
Owl Cottage,  
Bowerland Lane,  
Old Wives Lees,  
Canterbury,  
CT4 8AT.  
T: 07789 435934



**YVE WHITE**  
The Cottage,  
Selling Road, Old  
Wives Lees,  
Canterbury,  
CT4 8BH.  
T: 01227 730492.

### Chilham Parish Council (June 2019)

T: 07923 631596

E: [clerk@chilhamparishcouncil.gov.uk](mailto:clerk@chilhamparishcouncil.gov.uk)

W: [www.chilhamparishcouncil.gov.uk](http://www.chilhamparishcouncil.gov.uk)

Parish Councillors: Nick Lester-Davis; Steve Linter; Paul Lulham (Chairman); Doug Marriott;  
Jane Martin; Geoff Meaden; Richard Spencer-Tanner; Gill Schofield; Yve White